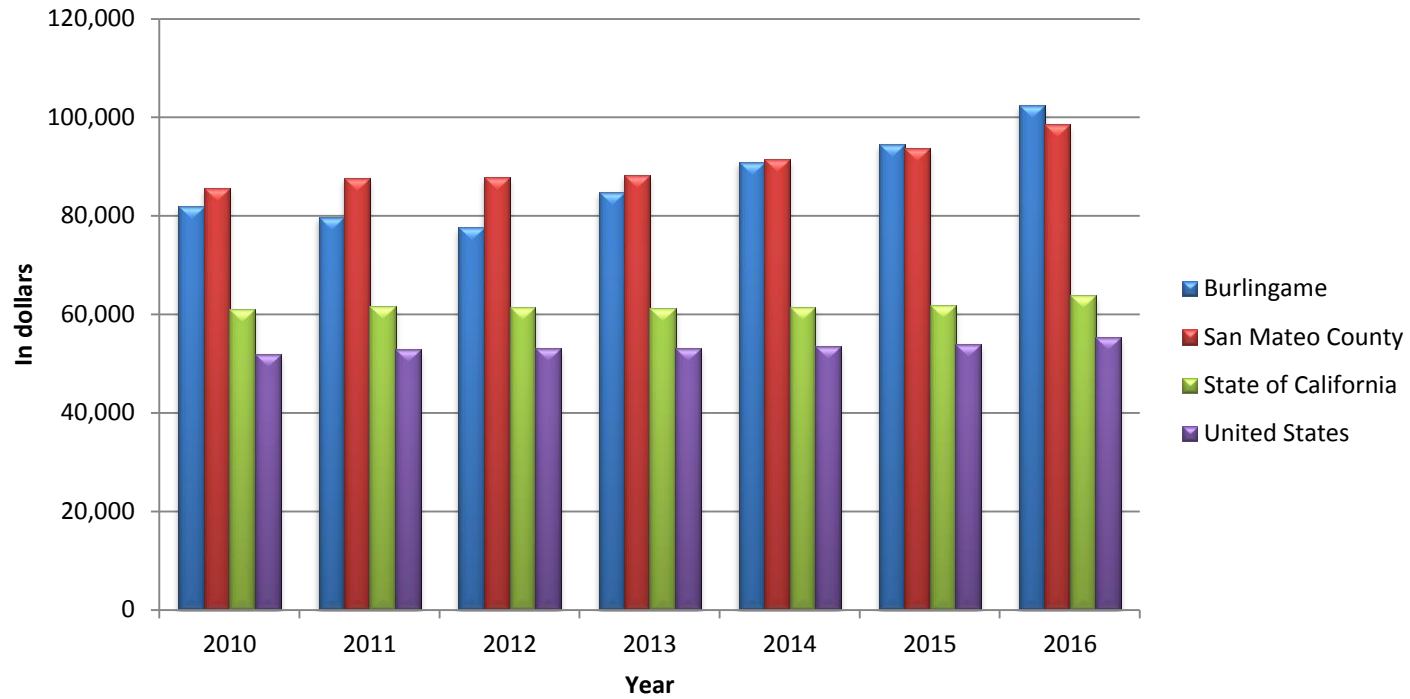


Median Household Income



LOCATION	2010	2011	2012	2013	2014	2015	2016
BURLINGAME	81,849	79,760	77,661	84,854	90,890	94,500	102,443
SAN MATEO COUNTY	85,648	87,633	87,751	88,202	91,421	93,623	98,546
CALIFORNIA	60,883	61,632	61,400	61,094	61,489	61,818	63,783
UNITED STATES	51,914	52,762	53,046	53,046	53,482	53,889	55,322

Source: U.S. Census, 2012-2016 American Community Survey 5-Year Estimates.